



SVENSK FÖRENING FÖR RADIOFYSIK
Swedish Society of Radiation Physics
(Member of IUPESM)

Image quality

Technical/physical aspects

Proposal

National quality documents for digital radiography
AG1

2007-05-10

Bertil Axelsson

Quality control

- Slow degradation is usually not probable
- Detection of malfunction
- Alterations in image processing



SVENSK FÖRENING FÖR
RADIOFYSIK
Swedish Society of Radiation Physics

Namn

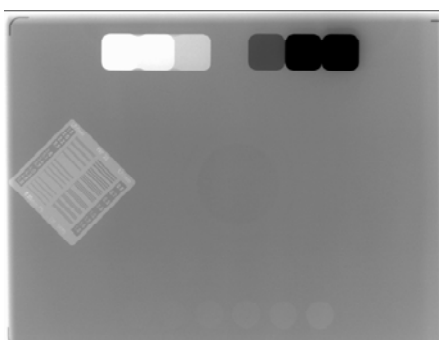
Parameters

- SDNR $(S_1 - S_2) / (\sigma_1^2 + \sigma_2^2)^{1/2}$
- Kerma
- What else?

Test phantom

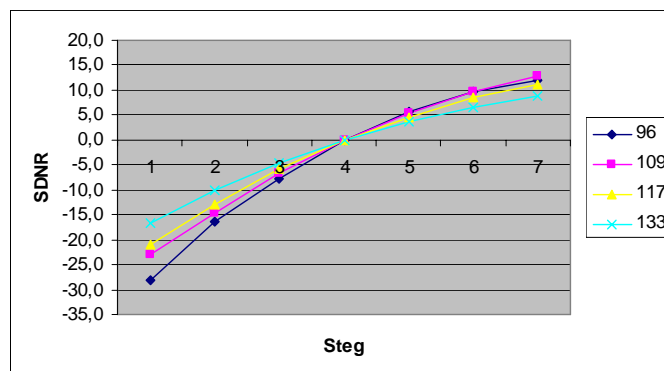
- Measurements of SDNR
- Entrance Kerma

1 mm Cu+
testobjekt



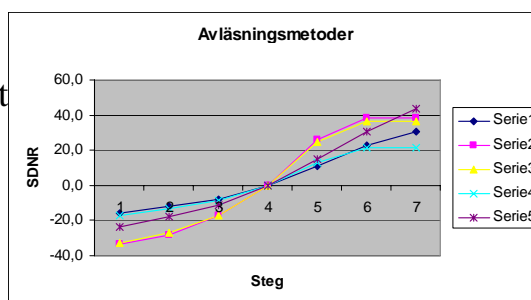
Changes in exposure parameters

- X-ray tube voltage



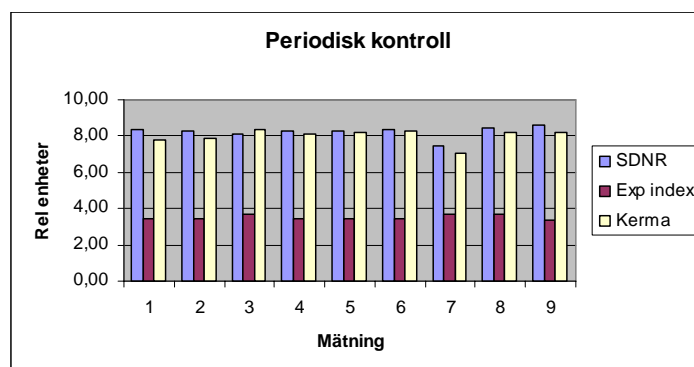
Changes in image processing

- Same exposure
- Readout in different image plate readers and different image processing



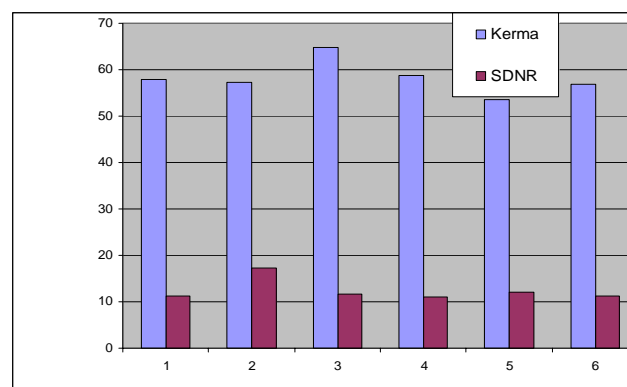
Used for constancy check Computed radiography system

- AEC
- Constant image processing

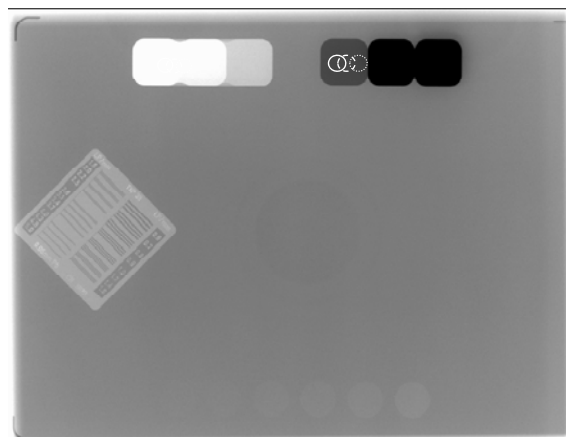
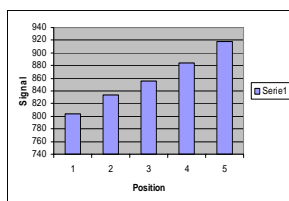


Constancy check Digital radiography

- AEC
- Constant image processing

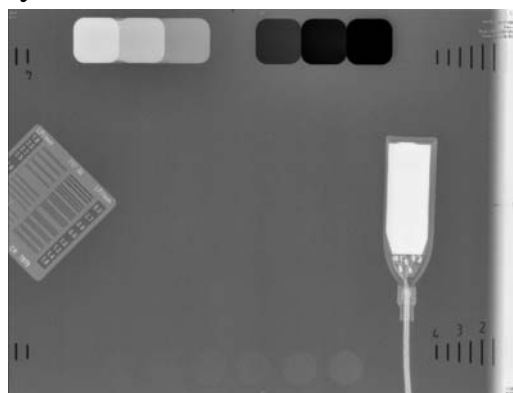


Reproducibility!



Other problems

- X-ray field



Detail resolution

- Need to check?
- Suitable method?
- Contrast-detail curves?